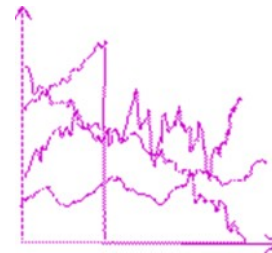
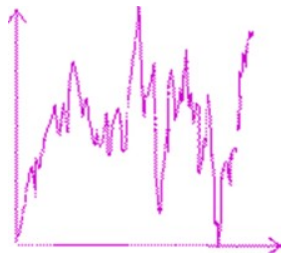
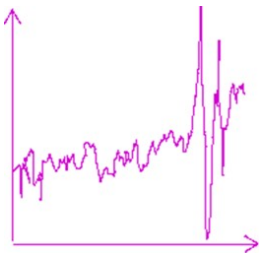


Getting Future Ready - Adaptation and Ethics

Gareth Johnston
Director Future Ready P/L



Summary

Climate impacts are already upon us

Responses vary globally to locally

Winners and losers created by distribution

Ethics and values rarely at heart of planning

Opportunities to engage through ethics

Technical fixes not always sustainable

Global failure requires glocal action

Glocal requires participatory approach

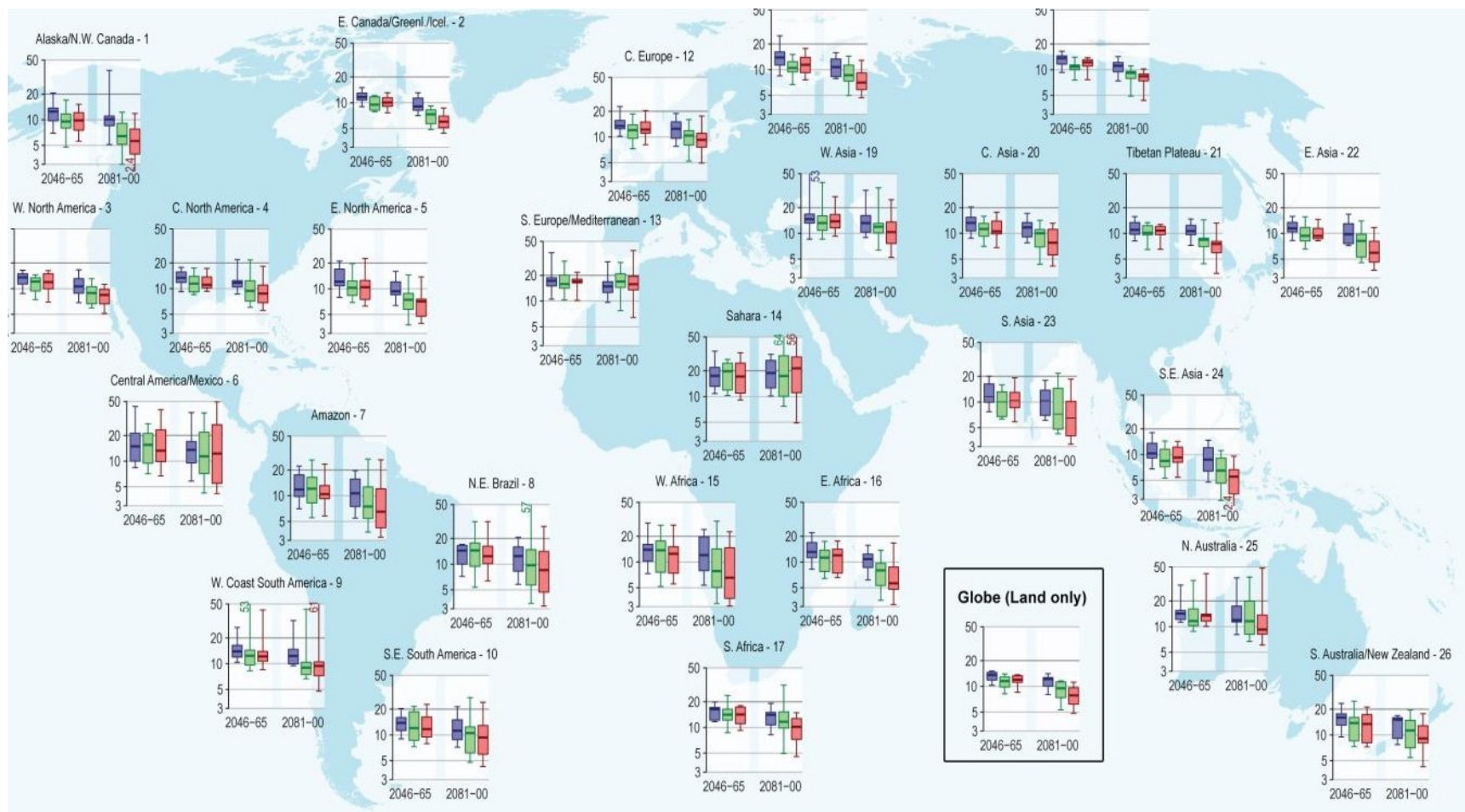
Impacts are already here

Exposure and vulnerability are dynamic, varying across temporal and spatial scales, and depend on economic, social, geographic, demographic, cultural, institutional, governance, and environmental factors

IPCC, 2011: Summary for Policymakers. In: Intergovernmental Panel on Climate Change Special Report on Managing the Risks of Extreme Events and Disasters to Advance Climate Change Adaptation [Field, C. B., Barros, V., Stocker, T.F., Qin, D., Dokken, D., Ebi, K.L., Mastrandrea, M. D., Mach, K. J., Plattner, G.-K., Allen, S., Tignor, M. and P. M. Midgley (eds.)]. Cambridge University Press, Cambridge, United Kingdom and New York, NY, USA

IPCC Models

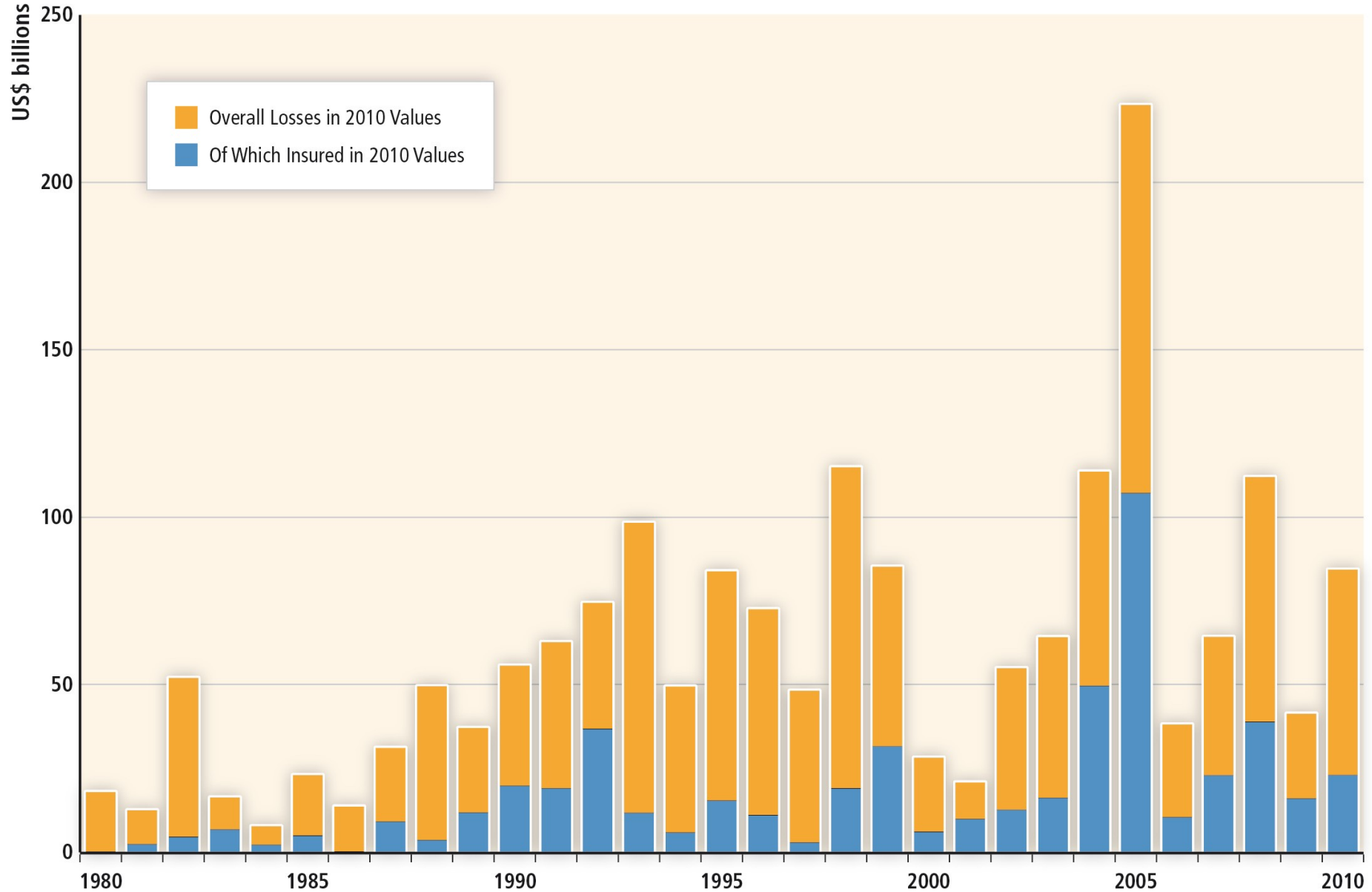
show decreasing return periods for floods



New Orleans, Brisbane, Europe

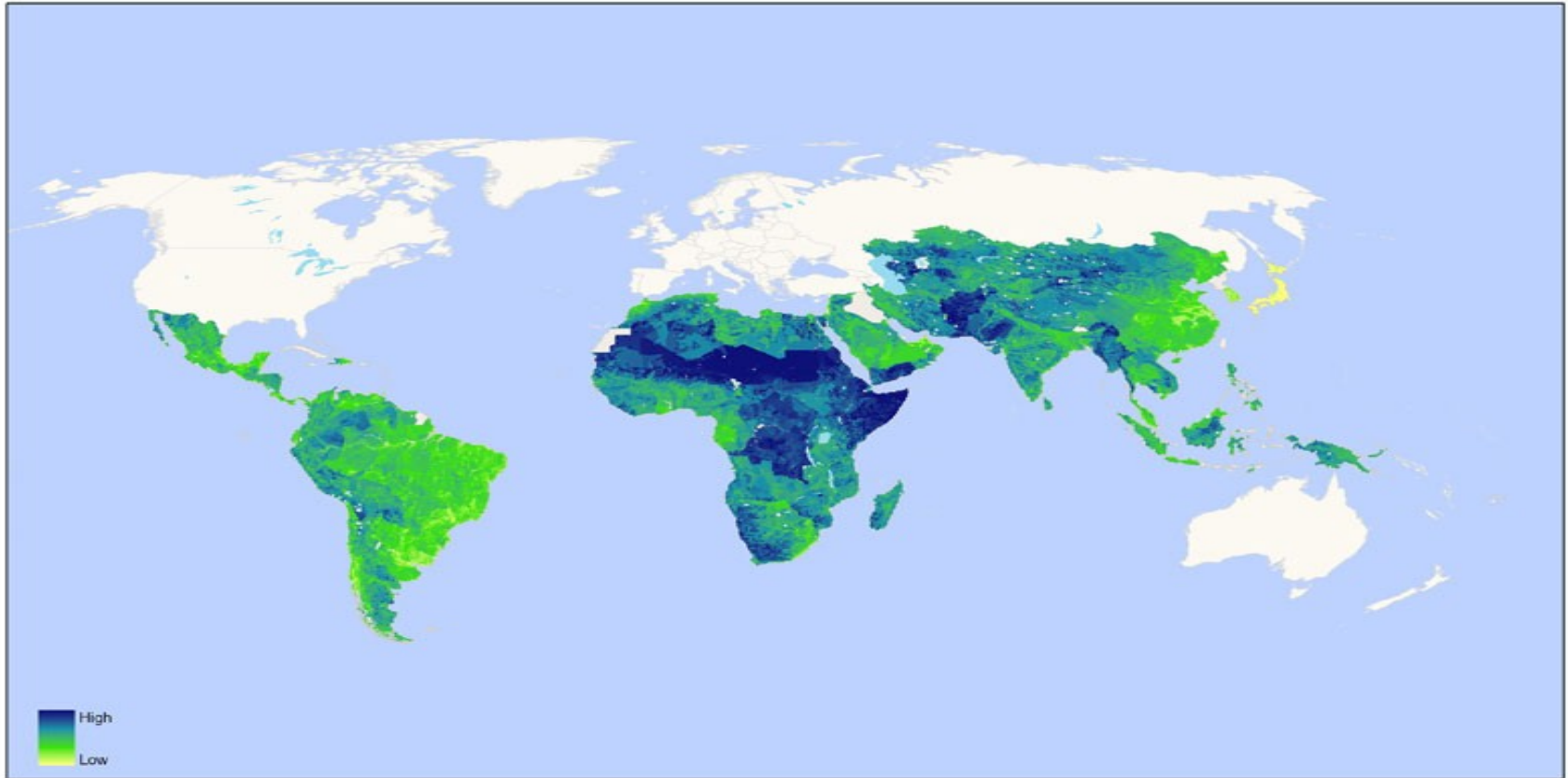


Winners + losers created by distribution

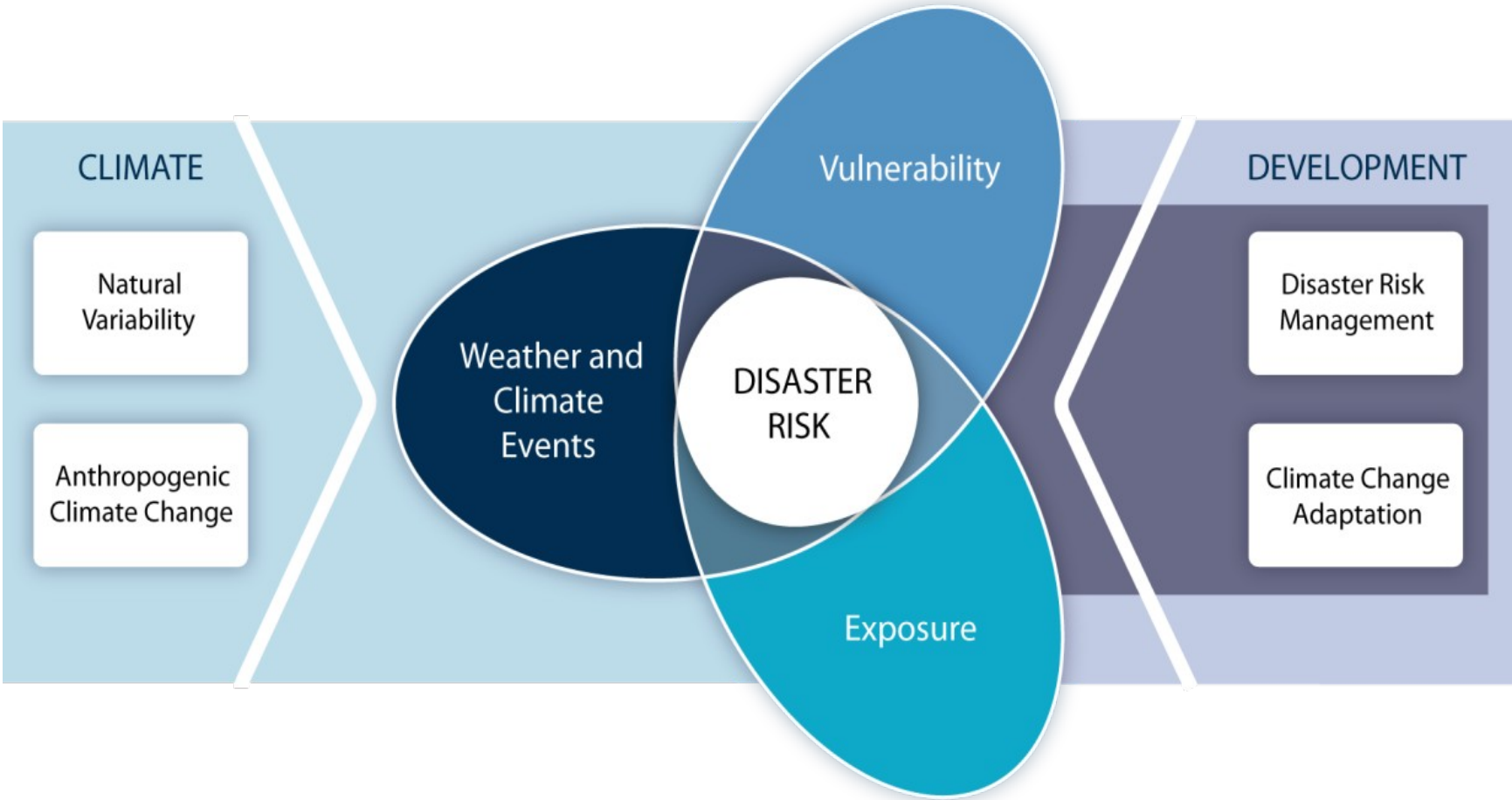


Munich Re 2011 graph modified by IPCC

What does this vulnerability map say?



How do we ideally respond?



Ethics and values rarely at heart of planning

Where/when is response required?

Who responds? Global, national, local

Bengal

Pakistan

Tuvalu

How/how much do we respond? Why
sometimes/not?

Short or long term?

Is Faith based aid discriminatory?

Opportunities to engage

Religious/belief differences create vulnerability

Ethics might be better approach

Too many views create confusion and complexity

Military type aid or technical project approach failing

Long term wellbeing view critical

Gap between science and practice should close

Is redistribution/development key issue?

Opportunity to recognise limits and create

Deep values based response

Ask the locals

Who is (not) driving adaptation?

Science hierarchies

Mass media misunderstanding, hype, mis-reporting and political hysteria

Global agencies World Bank, UN

NGOs and Aid

Money and market mechanisms

Human limits in psycho-physical responses

Corruption and conflict

Children

Technical fixes not always sustainable

Reports written in academic ivory towers don't translate well on the ground

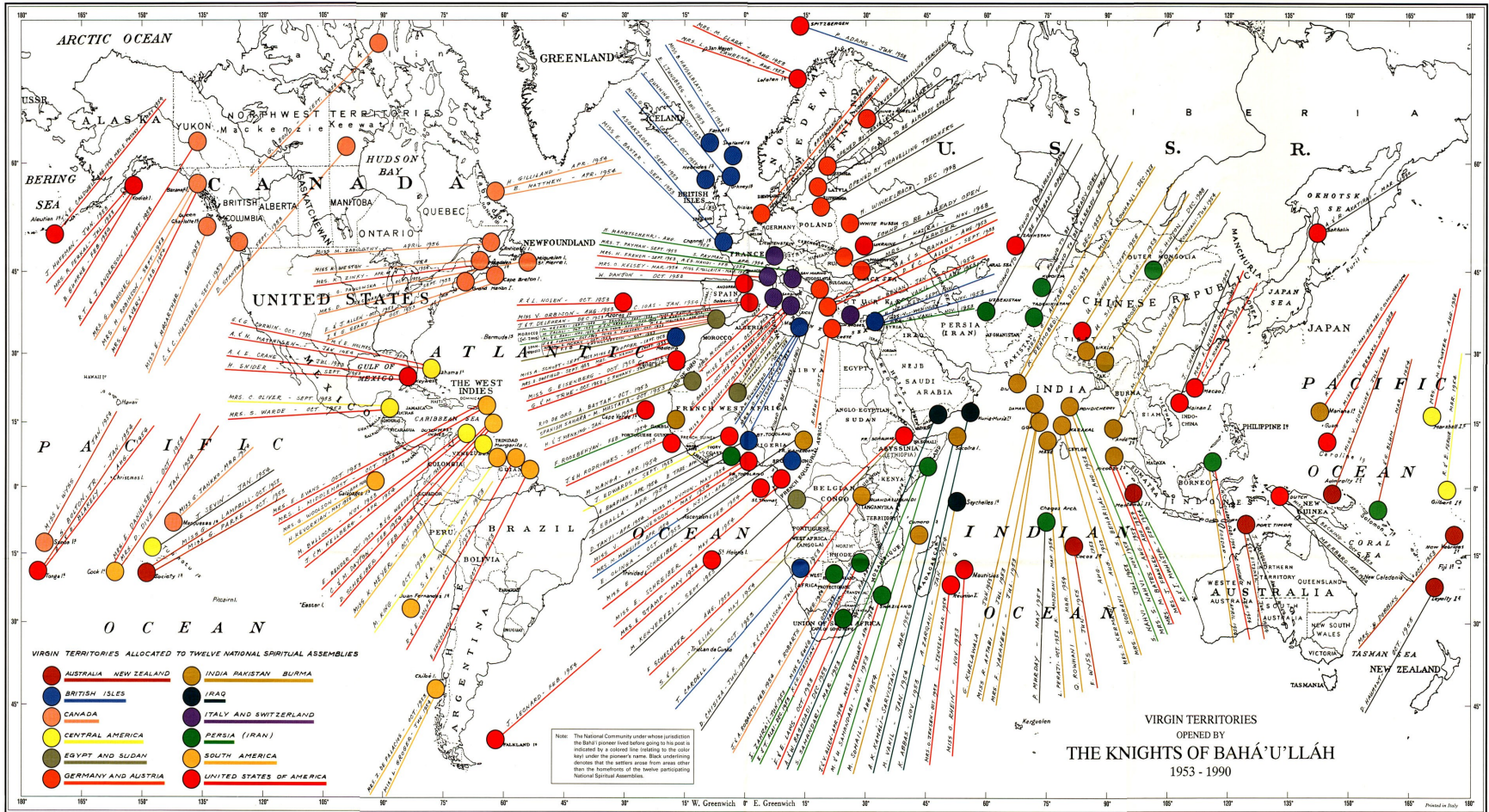
What/how do locals understand their needs to be?

How might science overcome systemic barriers? -
SOI used for aid priorities, index linked
aid/development

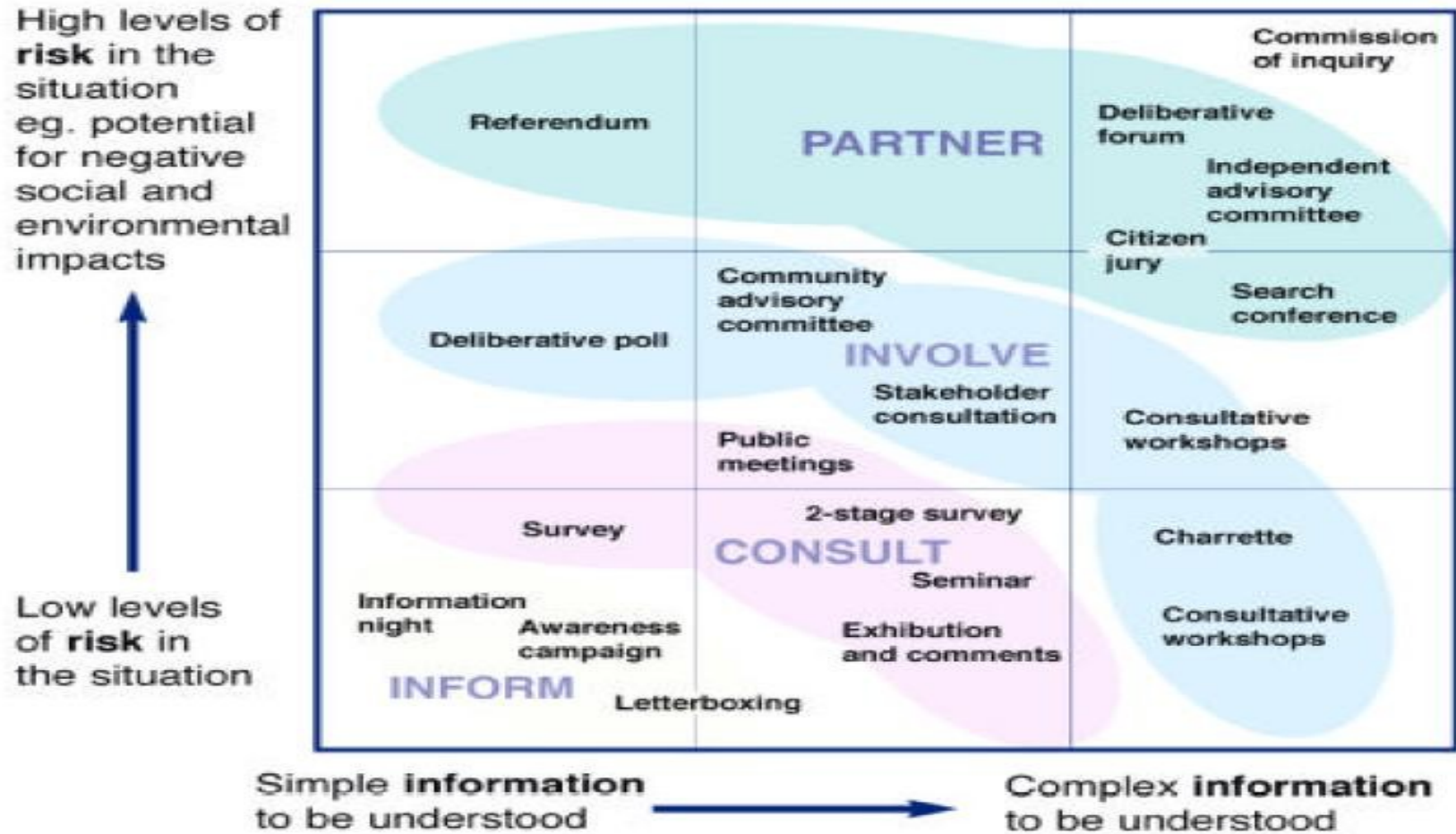
Accept that not all is salvageable/resilient/useful

Who are we to decide?

Global failure requires glocal action – Baha'i have amazing opportunity



Glocal requires participatory approach



Public trust and participatory involvement
(Robinson 2002)

