

Community resilience in the face of climate-driven extreme events

A Vanuatu case study

Arthur Dahl, former Coordinator, Secretariat of the Pacific Regional Environment Programme (SPREP), and advisor to the Government of Vanuatu

Serik Tokbolat, Representative of the Baha'i International Community to the United Nations, New York Office

Janot Mendler de Suarez, Technical Advisor, Red Cross Red Crescent Climate Centre

Temily Tavangar, University of Hong Kong



COP21 Climate Generations Area
5 December 2015

Community resilience in the face of climate-driven extreme events

A Vanuatu case study

Arthur Lyon Dahl Ph.D.

International Environment Forum (IEF)

<http://iefworld.org>

COP21 Climate Generations Area
5 December 2015

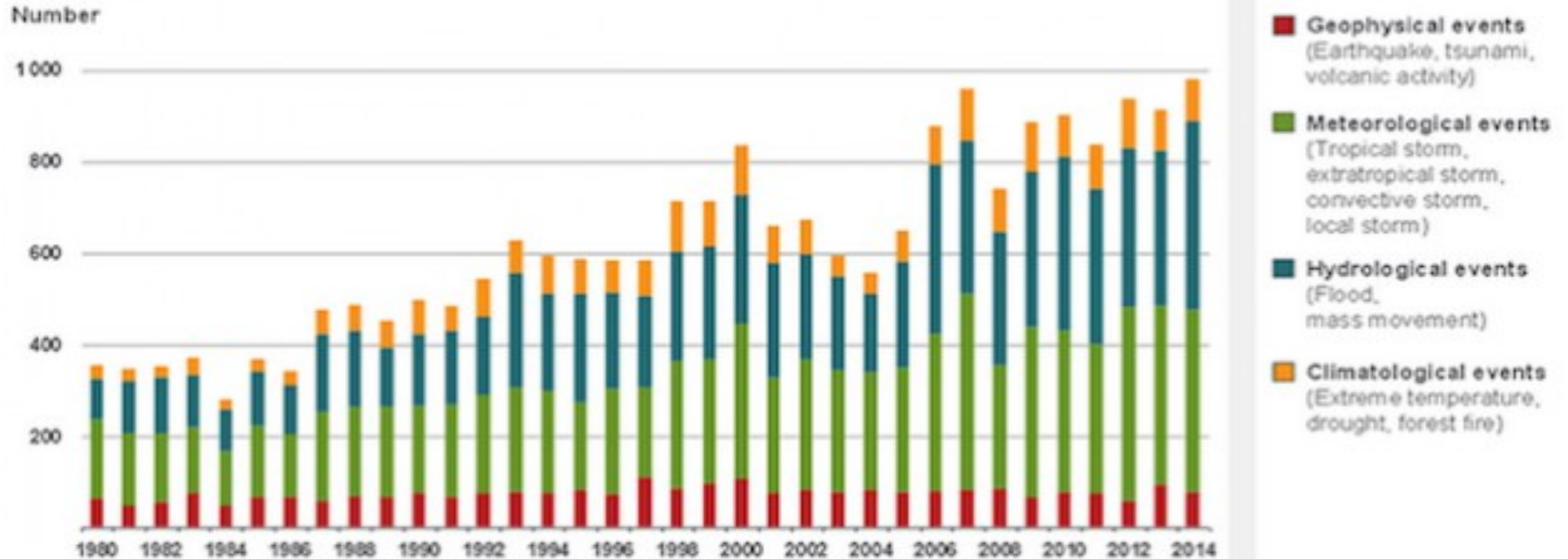


Community Resilience

- Climate-driven extreme events are experienced most directly at the community level
- Building community resilience is the best defense
- Apart from technical preparations like early warning systems, adequate shelters, improved building codes and evacuation plans, building community solidarity is essential
- Capacity to organize, to consult together, to take responsibility, young people empowered to act

WORLD NATURAL CATASTROPHES, 1980–2014

(Number of events)



Source: © 2015 Munich Re, Geo Risks Research, NatCatSERVICE. As of January 2015.

Natural catastrophes are increasing

Vanuatu

- Island nation in the South Pacific
- Independent 1980 (formerly New Hebrides)
- Land area: 12,190 sq.km.
- Sea area: 710,000 sq.km.
- Population: 282,000

Tanna Lat. 19.59°S Long. 169.33°E.

- Area: 555 sq.km. Altitude: 1,084 m.
- Active volcanic island, raised coral fringe
- Catastrophic threats: volcanic eruptions, cyclones, earthquakes (some coast raised 20m in last 200 years)

Cyclone Pam

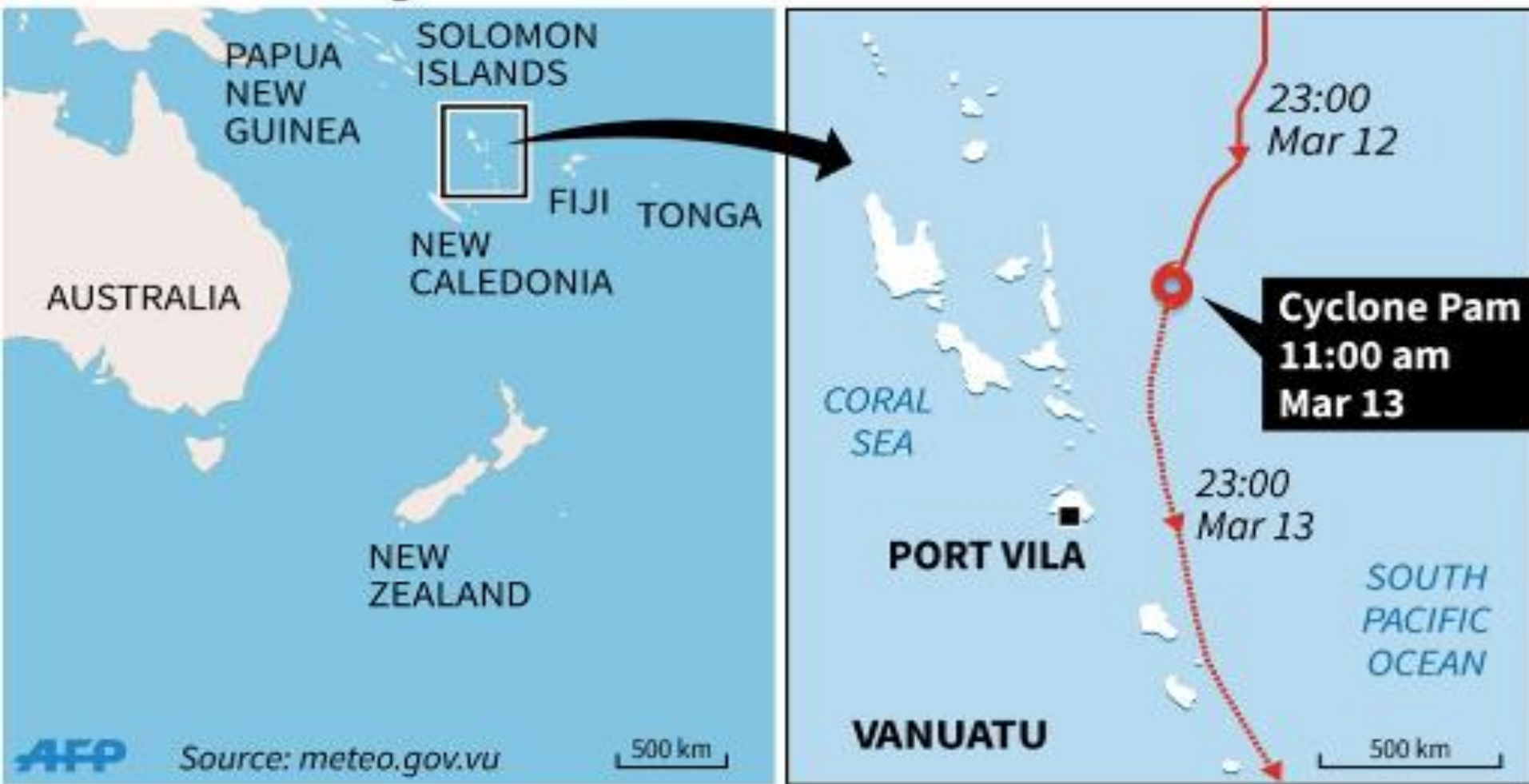
Severe Tropical Cyclone Pam of 2015 was the most intense tropical cyclone in the southern hemisphere in 2015 and regarded as one of the worst natural disasters in the history of Vanuatu. (Wikipedia)

Date: 6-15 March 2015

Category: Category 5 Hurricane (SSH5)

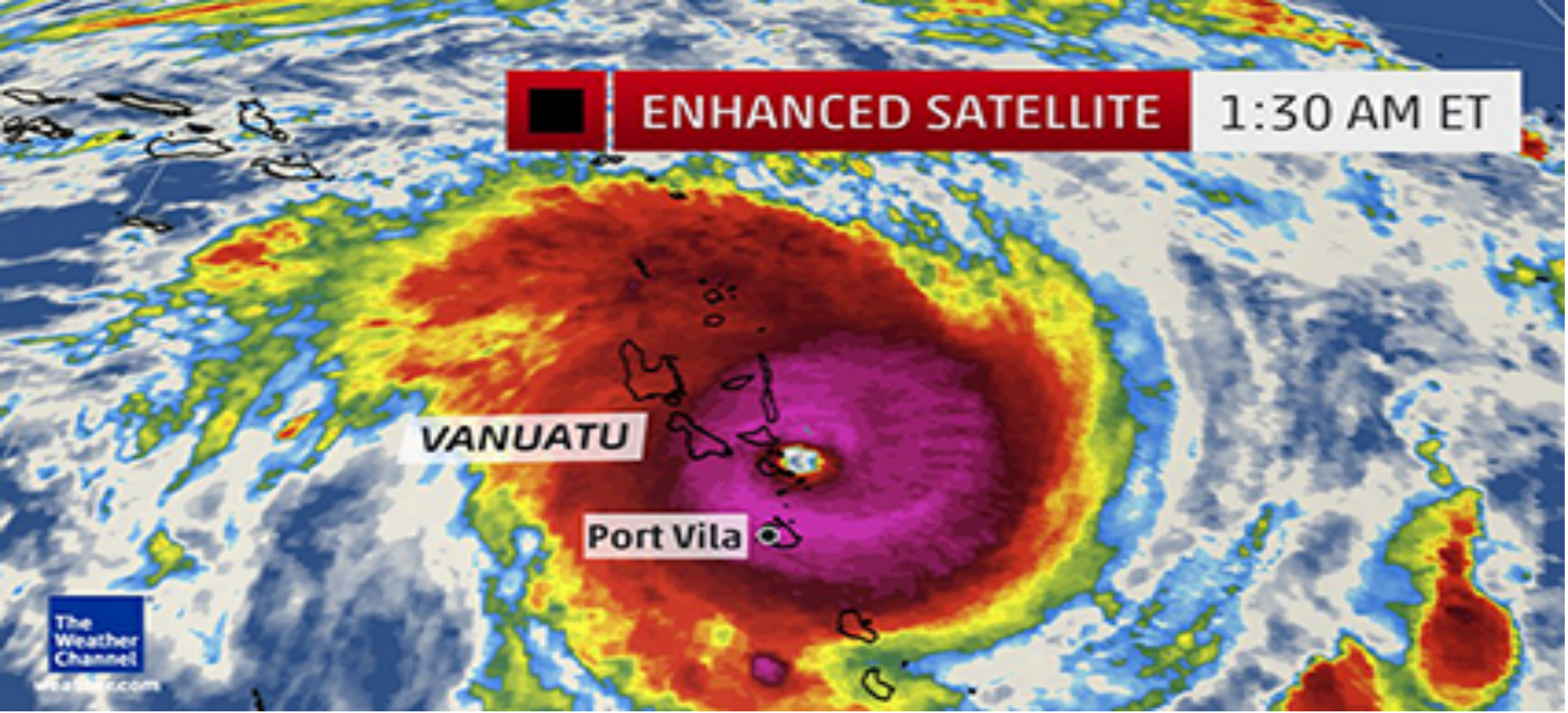
Affected areas: Fiji, Vanuatu, Solomon Islands, New Caledonia, New Zealand, Kiribati, Papua New Guinea, Tuvalu

Vanuatu cyclone





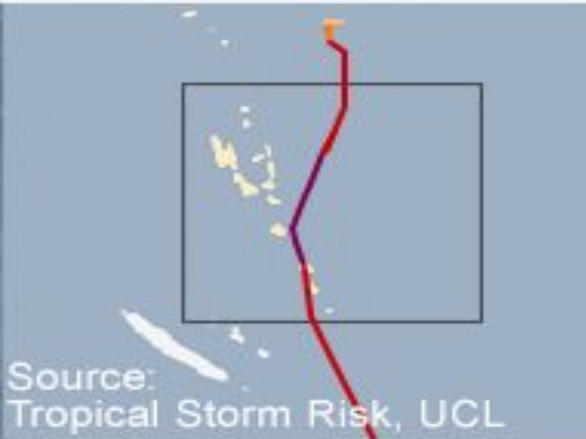
Cyclone Pam, 13 March 2015



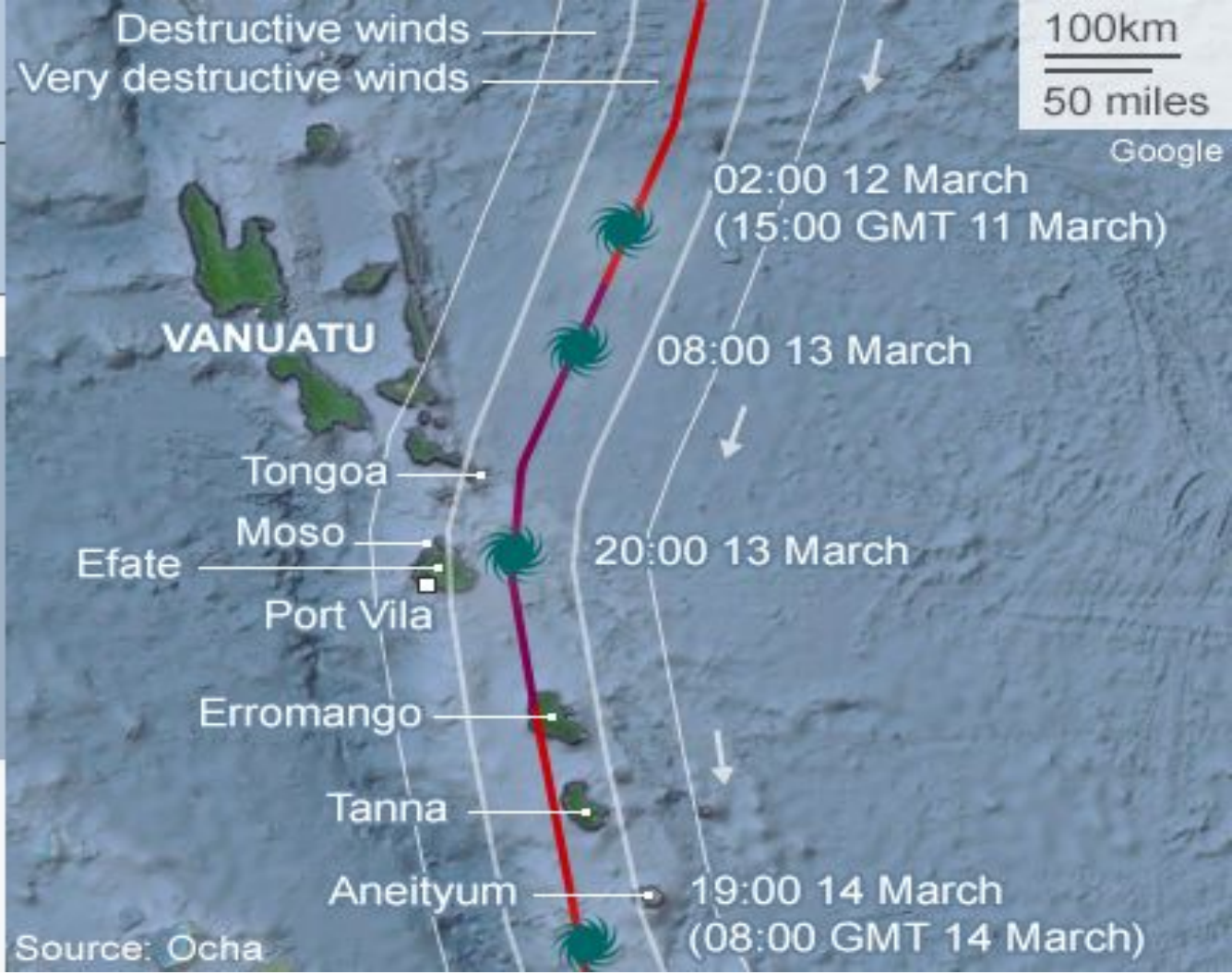
Cyclone Pam



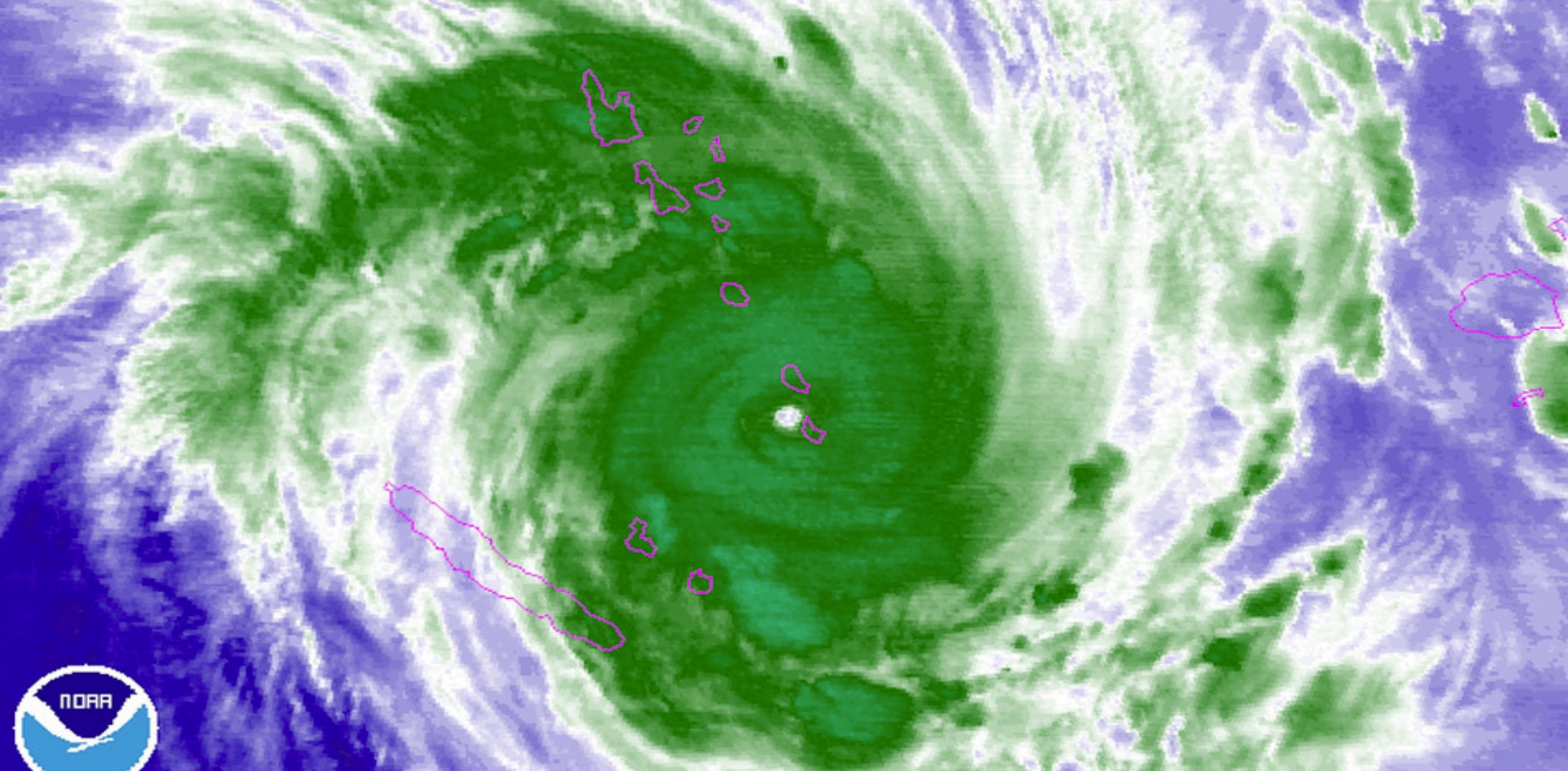
Cyclone windspeed



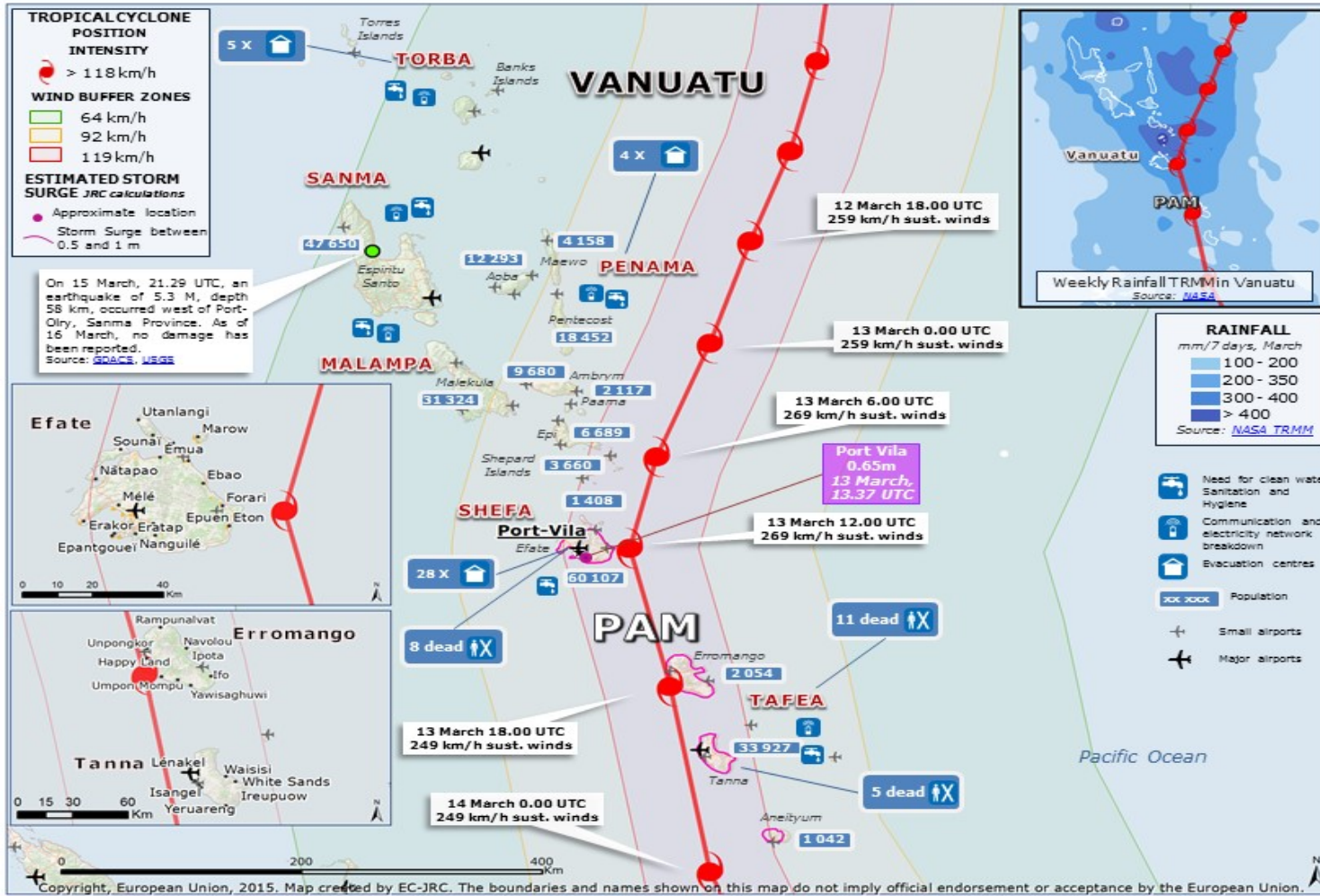
- 83-95mph
- 96-112mph
- 111-95mph
- >136mph



Cyclone Pam over Vanuatu



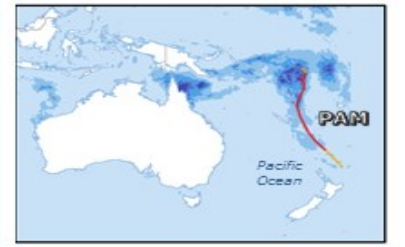
Cyclone Pam over Tanna 14 March 2015



SITUATION

- The Government of Vanuatu reports 24 people dead. 3 300 people are sheltered in 37 evacuation centres on Efate Island, and Torba and Penama provinces. There is urgent need for more shelters, as well as clean water, sanitation and hygiene supplies for those left homeless and in evacuation centres. Worst affected are the provinces of Shefa, Tafea, Malampa and Penama. State of Emergency in Shefa; likely to be extended to other provinces (including Tafea). Total or near-total destruction of buildings and crops in Shepherd Islands.
- The airport in Port Vila has reopened, allowing military aircraft to bring in relief supplies and personnel.
- Telecommunication networks are down throughout the country.
- The National Disaster Management Office (NDMO) is coordinating the response, activated the National Emergency Operations Centre (NEOC). The Government is coordinating and collating the various offers of assistance. The Vanuatu Humanitarian Team (VHT) is supporting the Government and is a collaboration between Vanuatu based NGOs, the Red Cross, UN and government agencies.
- Several organizations are stepping up relief efforts (WFP, UNICEF, OXFAM, Save the Children, Vanuatu Red Cross, World Vision, ADRA, CARE). An UNDAC team arrived on 16 March 2015.
- As of 16 March 2015, according to the Food Security and Agriculture Cluster's Initial Briefing, crops across the country are severely damaged; banana crops and leafy vegetable crops are likely to have been destroyed. Loss of livestock and destroyed fisheries infrastructure have also been reported.
- ECHO expert from RSO Bangkok arrived in Port Vila on 16 March 2015. A second expert is expected to land tomorrow.

Sources: ECHO, OCHA (1, 2, 3), [GRACE](#), [Vanuatu Government](#), Media



Damage from Cyclone Pam in Vanuatu

Tropical Cyclone Pam

8 AM EDT Fri Mar 13 2015

Position:
-17.7 N 168.7 E

Maximum Winds:
165 mph

Wind Gusts:
200 mph

Movement:
SSW at 9 mph

Storm Category

< 39 mph	Tropical Depression
39-73 mph	Tropical Storm
74-95 mph	Category 1
96-110 mph	Category 2
111-129 mph	Category 3
131-155 mph	Category 4
156+ mph	Category 5

Circle shows possible storm center locations.



The end of Cyclone Pam

Video: Bahá'í communities on Tanna

- Two days after the passage of Cyclone Pam
- Based on first-hand reports from local Baha'is
- Experience of the cyclone
- How the communities responded
- With other images of the Vanuatu Bahá'í community and a 2013 youth conference
- Made for the Bahá'í community

Bahá'í Faith

- World faith founded in 1844 in Persia
- Bahá'í World Centre in Haifa, Israel
- In Vanuatu since 1953
- Prophet-founder Bahá'u'lláh 1817-1892
- 'Abdu'l-Bahá 1844-1921
- Local Spiritual Assembly
- Institute process with booklets for community education: study circles, children's classes, junior youth, devotional meetings
- Period of fasting 2-20 March (like Ramadan)